



Hydra.Pen  
Skin Aesthetics Force

H2



## USER MANUAL

PLEASE READ THE MANUAL BEFORE USE



| No. | Description          |
|-----|----------------------|
| ①   | Power Interface      |
| ②   | Speed Display        |
| ③   | Power / Speed Button |
| ④   | Retaining Ring       |
| ⑤   | Needle Cartridge     |



① Needle Cartridge

② Retaining Ring

③ Protective Cover

④ Soft Plug

### Wireless Model

The instrument use both built-in battery and AC power

1.Plug in DC adaptor to the jack

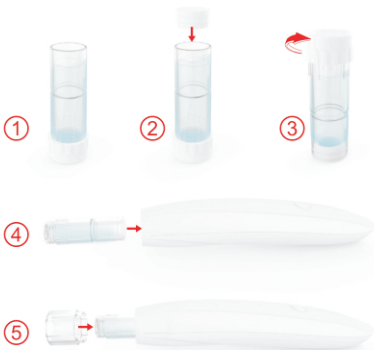
2.Plug in DC adaptor to AC outlet

3.To charge the battery: Plug the adapter into an outlet and connect it to charger

### Charging Status

● The power indicator stays red while charging

● The power indicator turns green after charging completed



- ① Put essence into the empty needle cartridge
- ② Put the soft plug at the bottom of needle cartridge
- ③ Remove the protective cover
- ④ Assemble the needle cartridge to the Hydra pen
- ⑤ Assemble the retaining ring to the hydra pen
- ⑥ Start the hydra pen. Press the power button for 2-3 seconds to start or shut down the instrument. It starts from slow to fast speed

### Attention

In order to protect the instrument well, do not invert the instrument to prevent the liquid backflow



Nano-HS



Nano-HR



H12



## **Packing list**

---

| Item             | Quantity |
|------------------|----------|
| Hand Piece       | 1 pc     |
| Needle Cartridge | 2 pcs    |
| Manual           | 1 pc     |
| Adapter          | 1 pc     |
| Power Cable      | 1 pc     |
| Retaining Ring   | 1 pc     |



## **Specification**

---

5

Product`s name: Hydra pen H2  
Adapter: 5V, 1000mA  
Weight: 430g  
Packaging size: 200\*100\*80mm



## **Maintenance**

---

### **General maintenance**

Keep it with its power off. Wipe its surface out with a dry cloth

Keep it away from direct sunlight or high temperature and humidity

Do not leave the measurement, repair or alter of the device to non-professional staff

Make sure to inspect the device and adapter before use

When you use the device which has not been used for a long time, make sure to check if it works properly with safety

### **Warranty**

The warranty period of Hydra pen H2 is 6 months. We offer repair to our products from the day they are purchased. If any of our products has damages or natural trouble. We offer repair or replacements



|  |  |  |                       |
|--|--|--|-----------------------|
|  | Alternating current  |  | Serial No             |
|  | Direct current   |  | EU Representative     |
|  | Class I equipment  |  | CE mark               |
|  | Attention, consult accompanying documents  |  | Manufacturer          |
|  | Date of manufacture  |  | Floating applied part |
|  | Please be sure to read instructions before use and follow as described.  |  |                       |
|  | <b>Do not apply it to the man as follow:</b><br>1. Who has acute disease or bloody disease over 38°C<br>2. Who has allergy and hemophilia<br>3. Who has melanosis of the face<br>4. Who has high internal heat<br>5. Who regularly visits hospital<br>6. Who takes medicines<br>7. Who is under 12 years old |  |                       |
|  | Do not use it on the power other than AC 220V.<br>It may cause fires or malfunction  |  |                       |
|  | Do not use it near the place with high temperature, dust or humidity<br>(Near the humidifier). It may cause malfunction.   |  |                       |
|  | Do not repair, disassemble or alter the controller and the body.<br>It may cause malfunction.  |  |                       |
|  | Do not touch the device or detach the power cords with wet hands.<br>It may cause electric shock.  |  |                       |
|  | Do not use the stripped cord or propped cord.<br>It may cause fires(Be sure to replace it with another).   |  |                       |
|  | Do not use the propped cord which has crack or scars.<br>It may cause scars on the skin.   |  |                       |
|  | When you don't use it for a long time, unplug it from the outlet.  |  |                       |
|  | Be sure to have an inspection for test. If any troubles are found,<br>get it repaired.   |  |                       |
|  | No one other than the operator can touch it.<br>It may cause accidents or malfunction.   |  |                       |



Hydra.Pen  
Skin Aesthetics Force