



## 1.27mm Pin Header Single Row SMT Type H1.7/2.5

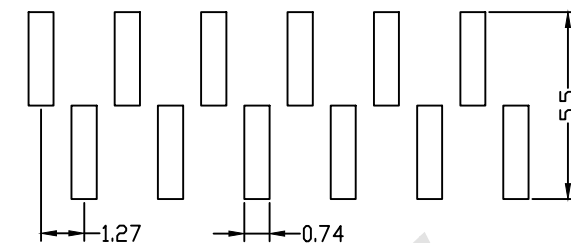
### SPECIFICATION

Current Rating:	1Amp
Insulation Resistance:	1000M ohms min
Contact Resistance:	20M ohms max
Dielectric Withstanding:	AC500V
Operating Temperature:	-65°C to +125°C
Contact Material:	Brass
Insulator Material:	PA6T,UL 94V-0 Black

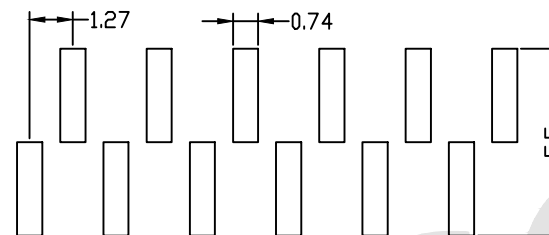
### Ordering Code:

PHCM05 - X - X - S - A-D-W - X - X - X - X  
 ① ② ③ ④ ⑤ ⑥ ⑦ ⑧ ⑨

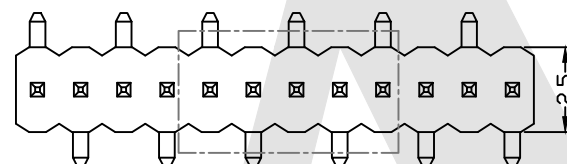
- ① Series No:
- ② No. of Contacts  
01 To 50
- ③ Contact Plating:  
G0: Gold flash S0: Selective  
G1: 3u" Gold S1: Selective 3u"  
G2: 5u" Gold S2: Selective 5u"  
G3: 10u" Gold S3: Selective 10u"  
G4: 15u" Gold S4: Selective 15u"  
G5: 30u" Gold S5: Selective 30u"  
SN: Tin
- ④ Connector Type  
S: Single
- ⑤ Pin Length:  
A: 0300=3.00mm  
D: 0020=0.20mm  
W: 0420=4.20mm  
Please mark the desired length in the A/D/W
- ⑥ Insulator Material  
B: PA6T  
C: LCP  
E: PA9T
- ⑦ Packing  
A: Tray  
B: Bag  
T: Tube  
U: Tube+CAP  
R: Tape&Reel  
W: Tape&Reel+CAP
- ⑧ Plastic High  
H1: 1.7mm  
H2: 2.5mm
- ⑨ PCB Layout Option  
A: Type A  
B: Type B



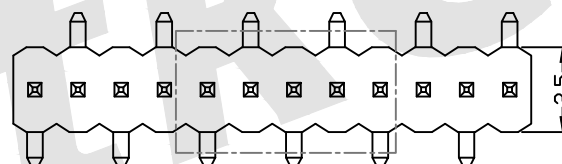
TYPE A  
PCB LAYOUT



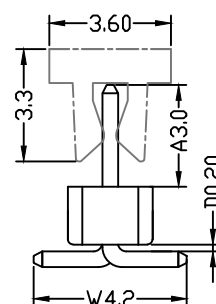
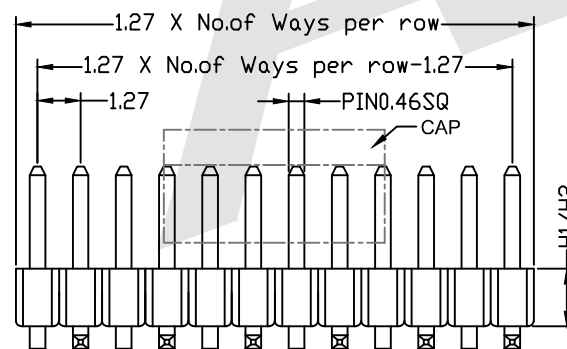
TYPE B  
PCB LAYOUT



TYPE A

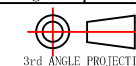


TYPE B



Unless Otherwise specified tolerance  
 X. XX: ±0.20  
 X. X: ±0.25 X. XXX: ±0.15  
 X. XX: ±0.35  
 X. X: ±0.25 X. XXX: ±0.15

SCALE: As Shown UNIT: mm  
 DRAW ZLA DATE 24/04/2022  
 CHECK BobYang DATE 24/04/2022



**Atkconn**® ATKCONN ELECTRONICS CO., LTD  
[Http://www.atkconn.com](http://www.atkconn.com)

TITLE:  
 1.27mm Pin Header Single Row SMT Type  
 (W=2.5,H=1.7,2.5)

DRAWING NO: PHCM05-XXS-0300-0020-0420-XXXX  
 PRODUCT NO: PHCM05-XXS-0300-0020-0420-XXXX

REV	DESCRIPTION	DATE
1		
2		
3		
4		
5		